



**CURBSIDE**  
COLLECTION

CURBSIDE COLLECTION  
BY DEVIN MICHAEL BAZEMORE

---







00 \_\_\_\_\_ CONTENTS

PROJECT BRIEF \_\_\_\_\_ 5  
 MISSION \_\_\_\_\_ 6  
 STRATEGIC OBJECTIVES \_\_\_\_\_ 7

LOCATION \_\_\_\_\_ 9

GEOGRAPHY & DEMOGRAPHICS \_\_\_\_\_ 11

EXISTING COMPANIES W/SIMILAR DESIGN MOTIVES \_\_\_\_\_ 13

THE STORIES \_\_\_\_\_ (17-81)  
 SMALL \_\_\_\_\_  
 LARGE \_\_\_\_\_

CURBSIDE COLLECTION \_\_\_\_\_ (85-119)  
 SMALL \_\_\_\_\_  
 LARGE \_\_\_\_\_

OUTRO \_\_\_\_\_ 125







## PROJECT BRIEF

---

DEVIN BAZEMORE APPROACHED HIS SENIOR THESIS WITH AN UP-CYCLED OBJECTIVE... TO CREATE AN ENTIRE PRODUCT LINE FROM DISCARDED MATERIAL/OBJECT. THE PLOT BEHIND THE COLLECTIONS' STORY IS TO PROVE THAT THERE IS STILL LIFE IN WASTE MATERIAL. IN A SENSE WE WILL MANIPULATE THE OBVIOUS, WHICH REFERS TO THE RE-PURPOSING OF MATERIALS THAT HAVE OBVIOUS PURPOSES AND QUALITIES TO THE TYPICAL HUMAN BEING, BY ACKNOWLEDGING TRASHED ITEMS, GIVING A FUNCTION TO THE NON-FUNCTIONAL, CRAFTING SPECIFIC MATERIAL AGAINST THEIR INTENDED USES, AND SO ON. THE DESIGN STORMING ENERGIZES OFF THE IDEALS OF FOUND -

OBJECT, UP-CYCLED, INDUSTRIAL, FUNCTIONAL, ONE-OF-A-KIND WAY OF THINKING. MANIPULATION OF STANDARD MATERIAL AND OBJECT INTENTIONS LENT ITSELF IDEALLY TO THIS CONCEPT.

THE CURBSIDE COLLECTION INTRODUCES NEW DIMENSION AND CONTEXT TO POTENTIAL RESIDENTIAL AND COMMERCIAL SETTINGS. COMPRISED OF A SERIES OF FOUND/MANIPULATED MATERIAL TURNED INTO ORIGINAL FURNITURE AND PRODUCT DESIGN, CURBSIDE COLLECTION IS AN EXPERIMENTATION OF UP-CYCLED RUBBISH, IMPLEMENTING THE MOST EFFICIENT USE FOR THE RE-WORKABLE MATERIAL. *CURBSIDE* REFERS TO THE FINAL DESTINATION OF THE MANIPULATED MATERIAL. IT'S THE LAST CHANCE TO HAVE ANOTHER CHANCE AT BEING SOMETHING GREAT BEFORE IT IS TRANSPORTED OUT TO THE LANDFILL. THROUGH THE UNEXPECTED USE OF MATERIAL AND OBJECT, CURBSIDE CREATES RANDOM ORDER AS TRASH MEETS FURNITURE WITH AN EASILY PREDICTABLE YET ORIGINAL RESULT.

THE OUTCOME OF THE PROJECT IS TO TELL A STORY THROUGH EACH INDIVIDUAL PIECE. EACH STORY IS COMPRISED OF WHERE THE MATERIAL OR OBJECT WAS FOUND, WHAT IT WAS USED FOR AND WHAT IT HAS BEEN THROUGH, AND THEN OF COURSE THE POTENTIAL AND UPDATED USE. THROUGH TELLING THE STORY, CURIOSITY IS SPARKED AND RELATIONSHIPS BETWEEN THE BUYER AND PRODUCT BECOME MUCH MORE INTIMATE THEREFORE LEADING TO A PERMANENT RELATIONSHIP.

MISSION STATEMENT

---

THE CURBSIDE COLLECTION HAS BEEN CRAFTED TO PRESENT QUALITY, ONE-OF-A-KIND, FUNCTIONAL WORKS OF ART, AT THE START, SOLD THROUGH LOCAL BOUTIQUE/FURNITURE STORES, AS WELL AS HAVING AN ONLINE CHANNEL FOR WORLDWIDE PRESENCE TO SPARK THE BRAND.





## STRATEGIC OBJECTIVES

---

- \_TO SELL INDIVIDUALLY CRAFTED FUNCTIONAL WORKS OF ART THAT SUPPORT LOCAL MATERIAL/WASTE RECYCLE NEEDS.
- \_PROVIDE QUALITY PRODUCTS THROUGH CUSTOMER APPROVED CRAFTSMANSHIP.
- \_ESTABLISH PARTNERSHIPS WITH LOCAL COMPANIES WHERE SPECIFIC CURBSIDE PRODUCTS MAY COINCIDE.
- \_THIS WILL ALLOW FOR PRODUCTS TO BE SOLD LOCALLY, ALLOWING FOR BEGINNING REVENUE, ADVERTISEMENT, AND TIME TO ESTABLISH A FULL TIME WEB PRESENCE.
- \_CONSTRUCT A BRAND STORE WITH AVAILABLE CAPITAL.
- \_SUPPORTING THE LOCAL COMMUNITY BY PROVIDING DEMANDS FOR EXCESS/DISCARDED MATERIAL AND OBJECTS, OPENING POTENTIAL FOR COLLABORATIVE PROJECTS.



LOCATION : RALEIGH, NC

---

THE CURBSIDE BRAND IS ENVISIONED TO RESIDE RESPECTIVELY IN THE DOWNTOWN RALEIGH AREA. CENTRALLY LOCATED IN NORTH CAROLINA, RALEIGH IS THE CAPITAL, AND IS BUSINESSWEEK.COM'S NO. 1 CITY IN AMERICA. THE CITY SPORTS A HIGH NUMBER OF RESTAURANTS AND CULTURAL INSTITUTIONS AS WELL AS A THRIVING SOCIAL SCENE, GREAT PARKS, AND GOOD SCHOOLS, SUCH AS NC STATE. THIS HIGH QUALITY OF LIFE COMBINED WITH NEW AND EXPANDING BUSINESS IN THE REGION HAS ATTRACTED MORE RESIDENTS TO RALEIGH. IT IS ALSO ONE OF THE FASTEST GROWING U.S. CITIES WITH A POPULATION IN THE METRO AREA THAT EXPANDED BY AN ESTIMATED 12.2 PERCENT FROM 2011 TO 2012. NOT TO MENTION THE OTHER WELL-

CULTIVATED CITIES IN THE STATE, INCLUDING THE FURNITURE SAVVY CITY OF HIGHPOINT, AS A NEAR NEIGHBOR PROVIDING INDUSTRY PARTNERS, AND BRAND RECOGNITION.

"IT'S A COMBINATION OF THINGS: THERE'S A GREAT UNIVERSITY SYSTEM HERE SO IT'S EASY TO FIND QUALIFIED TALENT AND IT'S A GREAT PLACE TO HIRE PEOPLE. THE RELATIVE COST OF LIVING IS LOW, THE COST OF REAL ESTATE IS DRAMATICALLY LOWER THAN OTHER CITIES, AND THE STATE IS PRO BUSINESS."

\_RED HAT CEO JIM WHITEHURST



RALEIGH, NORTH CAROLINA

---

GEOGRAPHIC CHARACTERISTICS:

- \_ELEVATION: 434 FEET / 132 METERS ABOVE SEA LEVEL
- \_AVERAGE ANNUAL HIGH TEMPERATURE: 70.7 F / 21.5 C
- \_AVERAGE ANNUAL LOW TEMPERATURE: 49.9 F / 9.9 C
- \_AVERAGE ANNUAL PRECIPITATION: 44.19 INCHES / 112 CENTIMETERS
- \_AVERAGE ANNUAL SNOWFALL: 4.5 INCHES / 11.43 CENTIMETERS
- \_9.494 ACRES OF PARKS AND GREENWAYS
- \_79 MILES OF DEDICATED PUBLIC GREENWAYS

DEMOGRAPHIC COMPOSITION OF THE CITY OF RALEIGH

- MALE: - 48.2%
- FEMALE: - 51.8%

\* PERCENT OF THE TOTAL CITY OF RALEIGH POPULATION OF 403,892, PER APRIL 2010 (CENSUS COUNT)

UNDER 18 YEARS OF AGE: 93,236 PEOPLE (23% OF TOTAL CITY POPULATION)

62 YEARS OF AGE AND OVER: 42,307 PEOPLE (10.5% OF TOTAL CITY POPULATION)

MEDIAN AGE, ACROSS THE CITY OF RALEIGH: 31.9 YEARS OF AGE







#### UHURU DESIGN

UHURU IS A DESIGN + BUILD FURNITURE COMPANY DEDICATED TO SUSTAINABILITY AND CREATING TIME-LESS DESIGNS. UHURU BUILDS EACH PIECE BY HAND, IN THEIR RED HOOK BROOKLYN STUDIO. WE STRONGLY AGREE WITH THE SHAKER ASSERTION THAT "BEAUTY RESTS ON UTILITY" WE STRIVE TO MAKE FURNITURE AND PRODUCTS THAT ARE BEAUTIFUL IN THEIR SIMPLICITY WITH AN ACUTE AWARENESS OF MATERIALS, AND CRAFT. MANY OF THE ITEMS WE CREATE UTILIZE MATERIALS THAT HAVE BEEN RECLAIMED, RECYCLED, REPURPOSED, REUSED OR OTHERWISE REJECTED FROM THEIR ORIGINAL FUNCTION.

urban hardwoods®

#### URBAN HARDWOODS

EACH PIECE OF SLAB FURNITURE YOU SEE ON OUR SITE IS IN STOCK. THE DIVERSITY OF OUR MATERIAL DEMANDS WE ONLY PRESENT CURRENT INVENTORY. MADE IN SEATTLE FROM TREES THAT WOULD HAVE BEEN DISCARDED, EACH PIECE IS UNIQUE. THE COLOR AND FIGURE OF THE WOOD, THE TOUCH OF THE CRAFTSMAN'S HAND, THE SHAPE AND SIZE CAN NEVER BE DUPLICATED. WE KNOW WHERE THE TREE GREW. WE TAKE RESPONSIBILITY FOR ITS SECOND LIFE AND ARE PROUD OF OUR WORK.

FOUR ■ HANDS

#### FOUR-HANDS

FROM OUR BEGINNINGS AS AN IMPORTER TO BECOMING THE INDUSTRY LEADER IN LIFESTYLE HOME FURNISHINGS, FOUR HANDS HAS ALWAYS BEEN DEDICATED TO RENEWING CREATIVITY AND SPARKING NOT ONLY THE EVOLUTION OF DESIGN, BUT ALSO THE REVOLUTION OF AFFORDABLE STYLE. TODAY, WE OFFER AN ARRAY OF BRANDS, PRODUCTS, AND PRICE LEVELS FOR OUR CUSTOMERS, WHETHER INDIVIDUAL DESIGNERS OR RETAILERS WITH STORES AROUND THE COUNTRY. TODAY, AS IN THE BEGINNING, WE ARE DRIVEN BY OUR UNWAVERING PASSION FOR CREATING HIGH QUALITY, THOUGHTFULLY DESIGNED HOME FURNISHINGS THAT INSPIRE THE SOUL. THAT'S BEEN OUR JOURNEY. WHERE WILL FOUR HANDS TAKE YOU?









## THE STORY

---

---

NOT ONE DAY GOES BY THAT SOME “THING” ISN’T LOST, DISCARDED, OR FORGOTTEN. ON AVERAGE, ONE PERSON WILL GENERATE 4.5 LBS. OF WASTE EACH DAY. A PERSON WILL PASS OVER MOST DISCARDED ITEMS CONSIDERING THEM UNUSABLE, OR GARBAGE. WHETHER IT IS AN OBJECT, MATERIAL, OR SOMETHING ELSE, A USE CAN BE GIVEN TO SUCH UNIMPORTANCE. WHAT MAKES EACH PIECE SO UNIQUE IS THE STORY: HOW THESE OBJECTS CAME TO BE, WHAT IT HAS BEEN THROUGH, THE STEPS TAKEN TO GET IT TO A BRAND NEW FUNCTIONAL BEGINNING. WE CONNECT WITH OUR CONSUMER THROUGH ORIGINALITY, STYLE, AND ABOVE ALL THE STORY WITHIN...





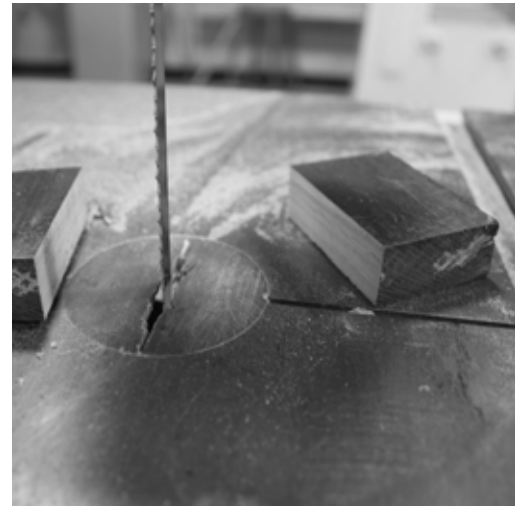
---

THE SCRAP CUTS FELL OFF THE TABLE LIKE CRUMBS.  
INSIGNIFICANT AND USELESS, THE EXCESS SCRAPS WERE  
THROWN INTO THE SCRAP PILE, SOON TO BE PUSHED INTO  
THE TRASH BIN. SUCH LIFELESS PIECES YET THEY HAVE  
AN INCREDIBLE AMOUNT OF POTENTIAL...

MATERIAL : WALNUT  
PURPLE HEART  
CYPRESS  
PECAN



OBJECT/MATERIAL







C O L L A B O

---



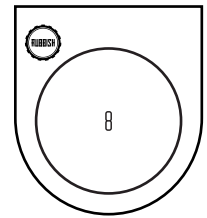
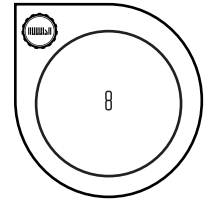
---



---

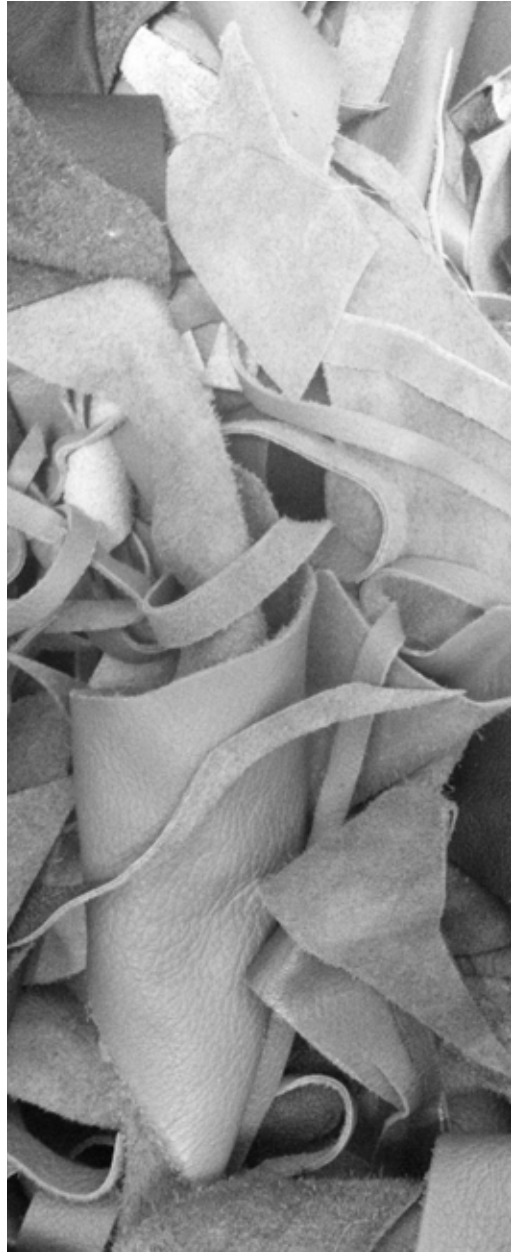


---



PROCESS





---

SCISSORS CUT AWAY AT THE LEATHER HIDES AS THE EXCESS WAS PUSHED INTO BAGS FOR DISCARDING. LOOK AT ALL THE COLORS AND THE DIFFERENT TEXTURES. WHAT ANIMAL DID EACH PIECE COME FROM, WHERE WAS THE ANIMAL RAISED, AND WHAT HAD IT LIVED THROUGH?..

MATERIAL : LEATHER SCRAP

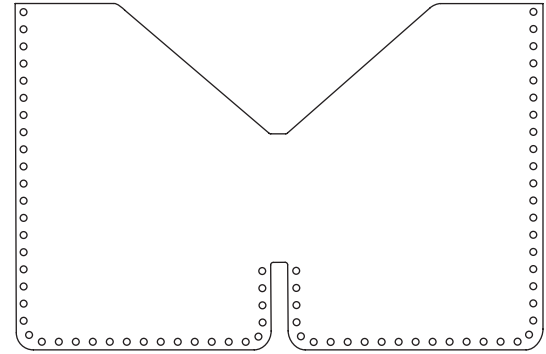
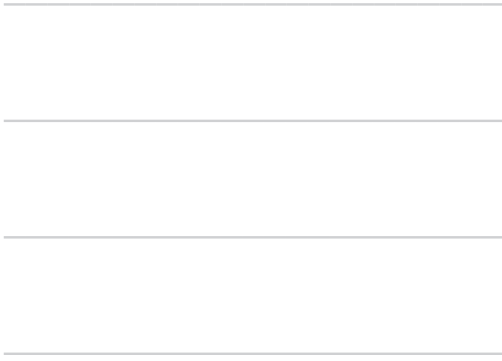


OBJECT/MATERIAL





C O L L A B O



PROCESS





---

---

HAPPY HOUR! THE BAR HAD JUST OPENED FOR SERVICE AS THE CROWD OF CUSTOMERS BEGAN SHOWING UP FOR THE EVENING. WITH SUCH AN ASSORTMENT OF TASTES THAT WOULD ROLL THROUGH THE NIGHT, THEY WERE BOUND TO SELL JUST ABOUT EVERY TYPE OF DRINK. WELL IT'S LADIES NIGHT AND GLASSES OF WINE ARE BEING ORDERED LEFT AND RIGHT. THE BOTTLES WERE EMPTYING QUICKLY AND UN-THOUGHTFULLY THROWN OUT MOVING ON TO THE NEXT DRINK...

MATERIAL : GLASS (WINE BOTTLES)



OBJECT/MATERIAL







C O L L A B O

---

---

---

---

PROCESS





---

THE AUTUMN SUN WAS AS BRIGHT AS EVER DEEP IN THE WOODLANDS OF NORTH CAROLINA. THE TREES STILL CONTAINING A FEW UN-FALLEN LEAVES, YET THE SUNRAYS FOUND THEIR WAY THROUGH TO THE WOODS FLOOR. THE LIGHT ILLUMINATED THE MULTICOLORED GLASS BOTTLES SUNKEN INTO THE GROUND, SOME OF WHICH STILL CONTAINING DIRT RESIDUE AND SIPS OF MOONSHINE...

MATERIAL : GLASS (BOTTLES)



OBJECT/MATERIAL





C O L L A B O

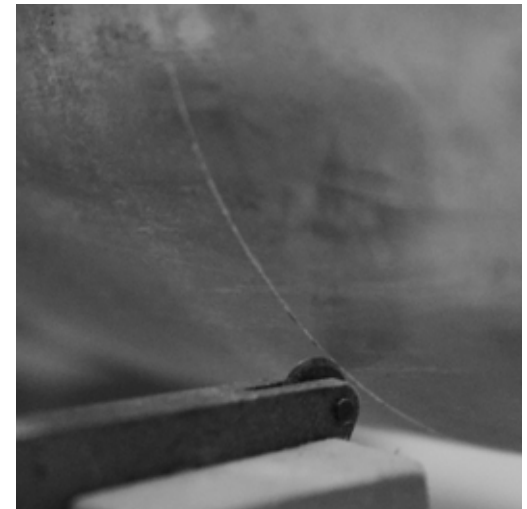
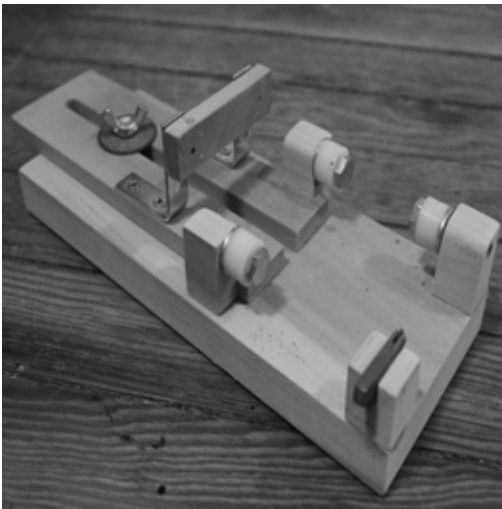
---

---

---

---

PROCESS





---

WHAT A BEAUTIFUL SATURDAY DRIVING THROUGH THE NEIGHBORHOOD TO GO GRAB A FEW THINGS FROM THE STORE, WHEN YOU PASS A NEIGHBORS YARD ONLY TO SEE THAT THEY DECIDED TO CHOP DOWN THAT OLD PECAN TREE THE KIDS USE TO PLAY IN WHEN THE ORIGINAL HOMEOWNERS USE TO LIVE THERE. THE PILE OF SLICED TIMBER FROM THE TREE WAS TOO HARD TO DRIVE PASSED WITHOUT THROWING A FEW CHUNKS IN THE TRUCK BED...

MATERIAL : PECAN TIMBER  
WASTE PLANED CYPRESS



OBJECT/MATERIAL







C O L L A B O

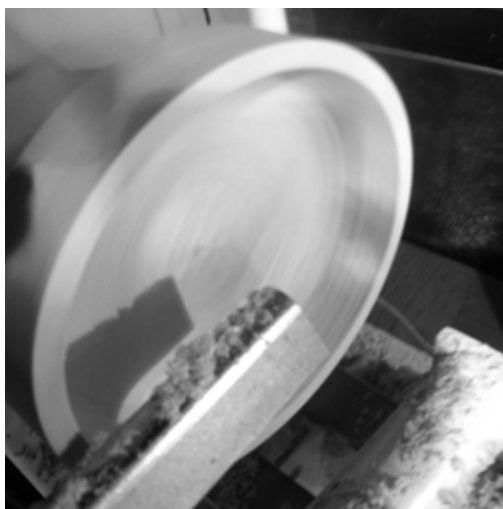
---

---

---

---

PROCESS





---

IT WAS A PRODUCTIVE DAY ON THE JOB SITE. OSB PANEL  
SCRAPS WERE BUILDING UP AND TOSSED OUT IN THE DIRT  
TO BE MOVED TO THE DUMPSTER FOR GARBAGE TAKE AWAY.  
MAYBE IT WOULD HAVE BEEN A LITTLE SMARTER TO ELIM-  
INATE THE AMOUNT OF SCRAP PIECES. WELL, YOU CAN'T  
DO MUCH WITH THE MATERIAL ANYWAY...

MATERIAL : OSB (ORIENTED STRAND BOARD)



---

OBJECT/MATERIAL





C O L L A B O

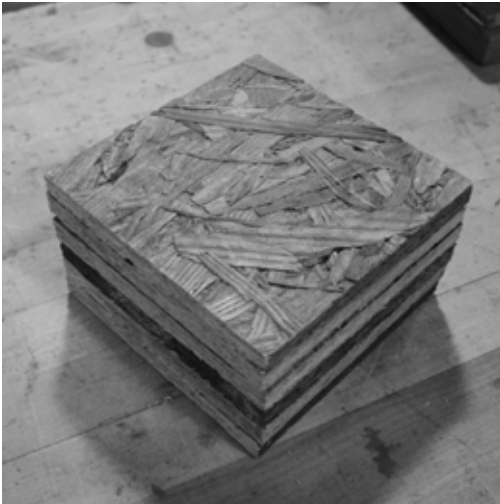
---

---

---

---

PROCESS





---

THE ABANDONED WAREHOUSE WAS CHILLY AND SMELT OF STILL WATER AND DUST. SOME OF THE WINDOWS WERE BUSTED OUT AND THERE WERE HOLES IN THE WALL LETTING IN EXTRA LIGHT. THE CONDUIT PIPING WAS SLOWLY PEELING OFF THE WALLS AND CEILINGS, RECEIVING A NATURAL PATINA. WITH THE HELP OF SOME OLD CONDUIT CONNECTORS FOUND STOWED AWAY IN A DUSTY CARDBOARD BOX BOUGHT IN BULK OVER A DECADE AGO, THE ABILITY TO BRING THE LIGHT BACK TO THESE OVERLOOKED MATERIALS CAN BE DONE...

MATERIAL : METAL CONDUIT PIPING  
HARDWARE  
ELECTRICAL



OBJECT/MATERIAL







C O L L A B O

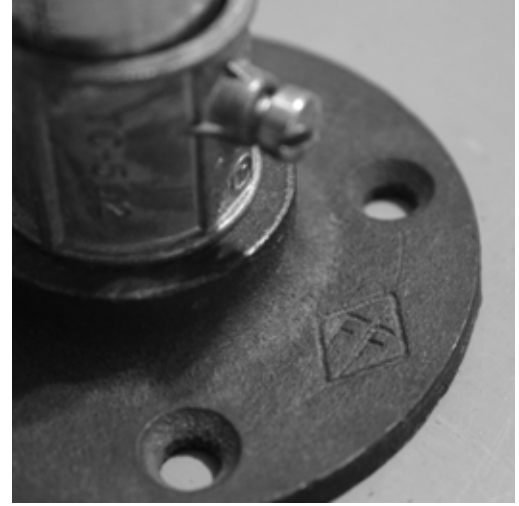
---

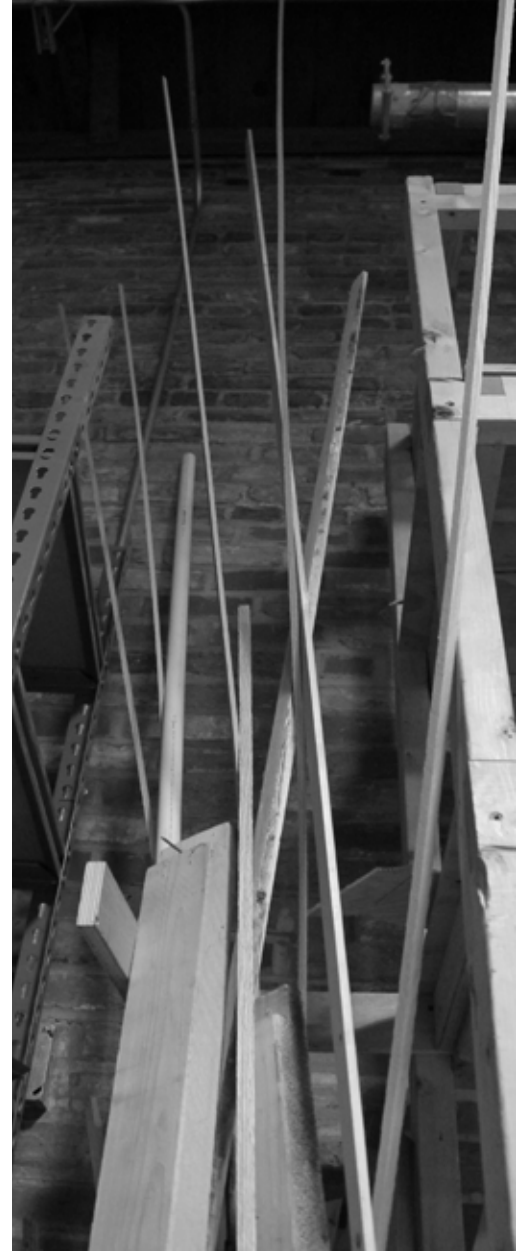
---

---

---

PROCESS





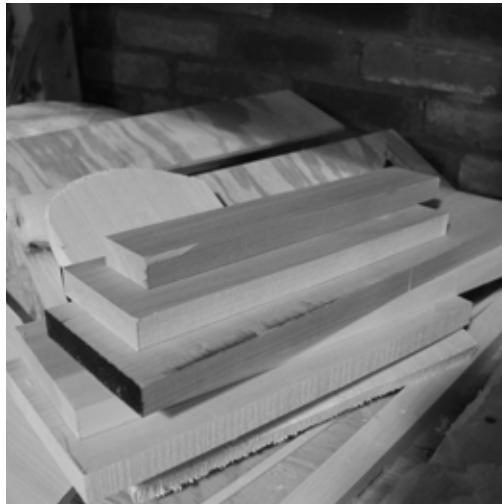
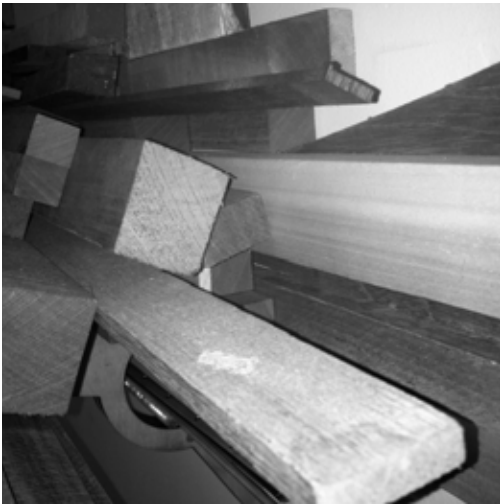
---

EXTENDING TO THE CEILING, THE WOOD SLATS SEEMED USELESS WHEN ALL THAT'S CARED ABOUT IS THE DESIRED DIMENSIONED CUT OF WHATEVER MATERIAL BEING WORKED WITH. ITS BETTER THEY BE IN THE SCRAP BIN THAN PILED UP OUT NEXT TO THE DUMPSTER I GUESS...

MATERIAL : MAPLE  
WALNUT  
PURPLE HEART  
MAHOGANY



OBJECT/MATERIAL





C O L L A B O

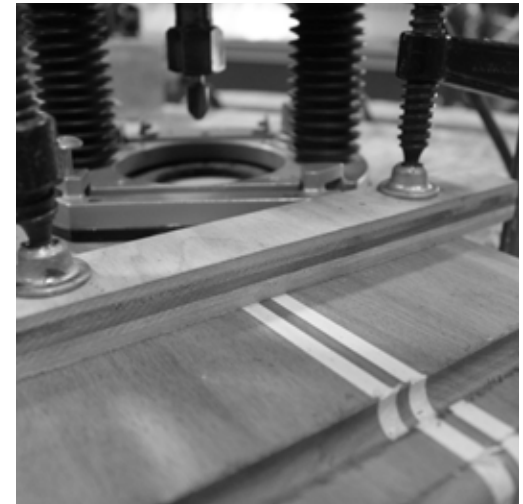
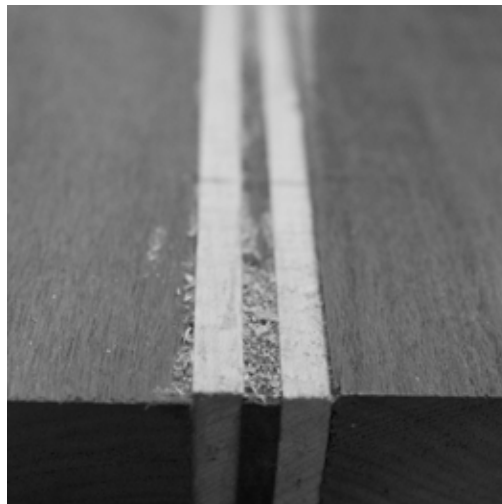
---

---

---

---

PROCESS





---

---

PERC, SAVANNAHS PREMIER WHOLESAL COFFEE ROASTER,  
GATHERED UP THEIR HEMP BAGS THAT ONCE TOTES COFFEE  
GROUNDS DELIVERED FROM DIFFERENT REGIONS OF  
CENTRAL AMERICA. THE BAGS WERE TOSSED OUT ONTO THE  
SIDEWALK TO ELIMINATE CLUTTER IN THE TIGHT WORK-  
SPACE. THE SMELL, THE HISTORY, THE COFFEE...

MATERIAL : COFFEE BEAN HEMP SACKS  
WOOD SHAVINGS



OBJECT/MATERIAL







C O L L A B O

---

---


---

---

PROCESS







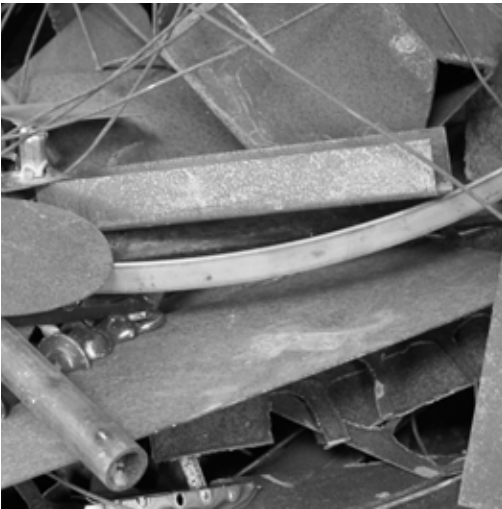
---

EXPLORING OUT BACK OF AN OLD RUN DOWN CAR GARAGE A PILE OF RUB-  
BISH IS SPOTTED UP AHEAD. MOST OF IT IS JUNK BUT SOME THINGS ARE  
WORTH KEEPING. WHAT WAS IT THAT CAUGHT THE CURIOUS EYE? IT WAS AN  
OLD CAR RADIO THAT HAD SUFFERED SEVERE CORROSION. THE INTERNAL  
PARTS WERE VISIBLE HINTING HOW THIS VINTAGE RELIC USED TO OPER-  
ATE. WITHOUT ITS ABILITY TO FUNCTION THIS OBJECT SEEMS TO HAVE  
LOST ITS PURPOSE...

MATERIAL : FOUND OBJECT (CAR RADIO)  
STEEL  
ELECTRICAL/HARDWARE



OBJECT/MATERIAL





C O L L A B O

---

---

---

---

PROCESS





---

---

OCTOBER 26, 2012: THE STORM WAS RELENTLESS, KICKING UP HIGH SURF AND HIGH WINDS. THE DUNES WERE BUILT UP ENOUGH TO PROTECT MOST OF THE RESIDENTIAL ARCHITECTURE BUT SUFFERED FROM SERIOUS EROSION. THE FENCING HELD STRONG BUT WOULD SEE ITS LAST DAYS UPON THE CLEARING OF THE STORM. THE WEATHERED TEXTURE AND HISTORY WILL FOREVER BE HARNESSSED IN THE GRAIN OF THE WOOD...

MATERIAL : DUNE FENCING  
STEEL



OBJECT/MATERIAL







C O L L A B O

---

---

---

---

PROCESS





---

THE SLATS WERE PERFECT FOR A FORT FLOOR. THE NATURAL PATINA AND WEAR GIVEN TO THE SURFACE OF EACH PIECE CARRIES ITS OWN MEMORY. FROM ALL THE EXPOSURE TO WEATHER, GROWTH, AND USE, EACH PIECE IS DIFFERENT AND PRESENTS THEIR OWN IMPERFECTIONS. THE HARD WOOD DOESN'T SEEM TO DISENTEGRATE RATHER HOLD ITS FLAVOR...

MATERIAL : PALETTE SLATS  
RE-PURPOSED CHAIR SWIVEL  
STEEL  
POPLAR



OBJECT/MATERIAL





C O L L A B O

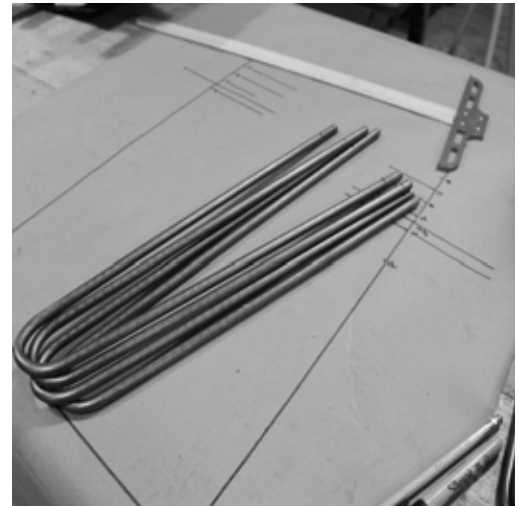
---

---

---

---

PROCESS





---

WHAT A MESS IT WAS, CARS WERE NO LONGER ABLE TO FIT IN THE GARAGE. THE TREADMILL STILL SITS AWKWARDLY IN THE CENTER OF THE COLD SPACE, FOLDED UP AND UNUSED. THERE IS AN UNKNOWING AMOUNT OF JUNK IN SUCH A SMALL TIGHT SPACE. A LOT OF IT COULD BE USEFUL AND IS HARD TO GET RID OF BUT THERE IS JUST A LACK OF TIME...

MATERIAL : WEATHERED PINE  
ANGLE STOCK STEEL



---

OBJECT/MATERIAL







C O L L A B O

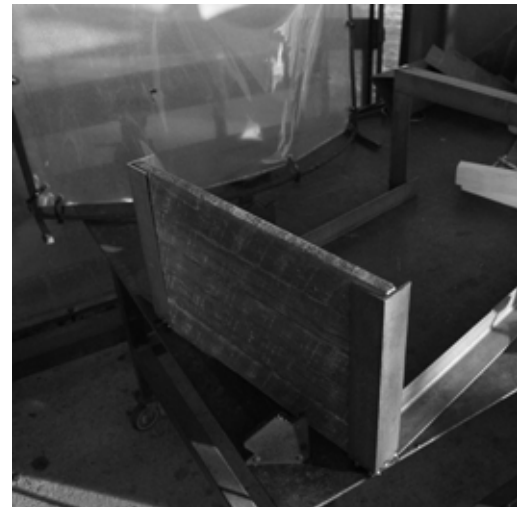
---

---

---

---

PROCESS





---

---

IDENTICAL TO DRIPS OF WATER, THE LIQUID BRONZE  
POURED INTO THE CERAMIC SHELL MOLD TO FILL IN THE  
INTENDED CAST OBJECT. EXCEEDING 2100 DEGREES F,  
THE MOLTEN METAL COULD HARDEN INTO ANY DESIRED  
SHAPE. SUCH PRESENT BEAUTY AS IT POURS OUT OF THE  
CAULDRON DIRECTING HEAT OUT IN EVERY WHICH DIREC-  
TION...

MATERIAL : CYPRESS  
STEEL  
BRONZE  
GLASS



OBJECT/MATERIAL





C O L L A B O

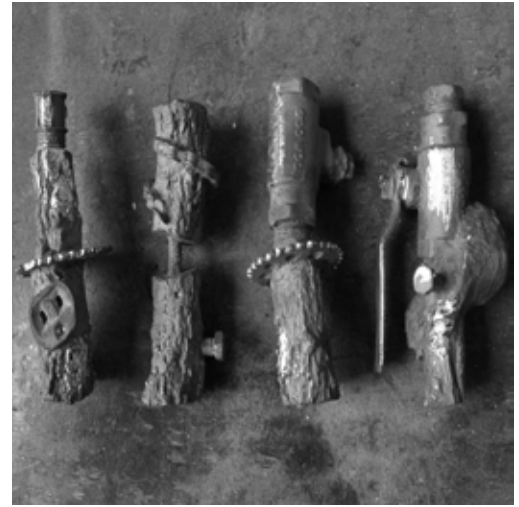
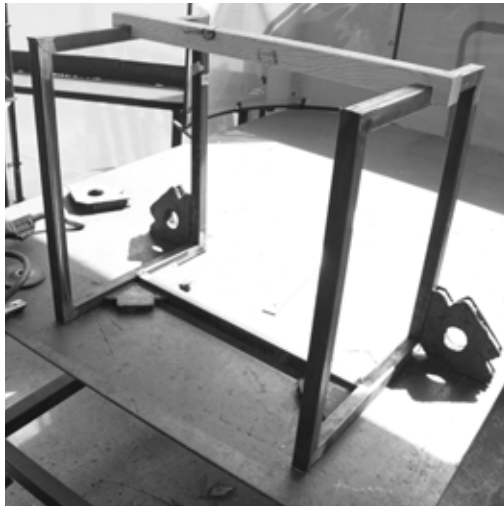
---

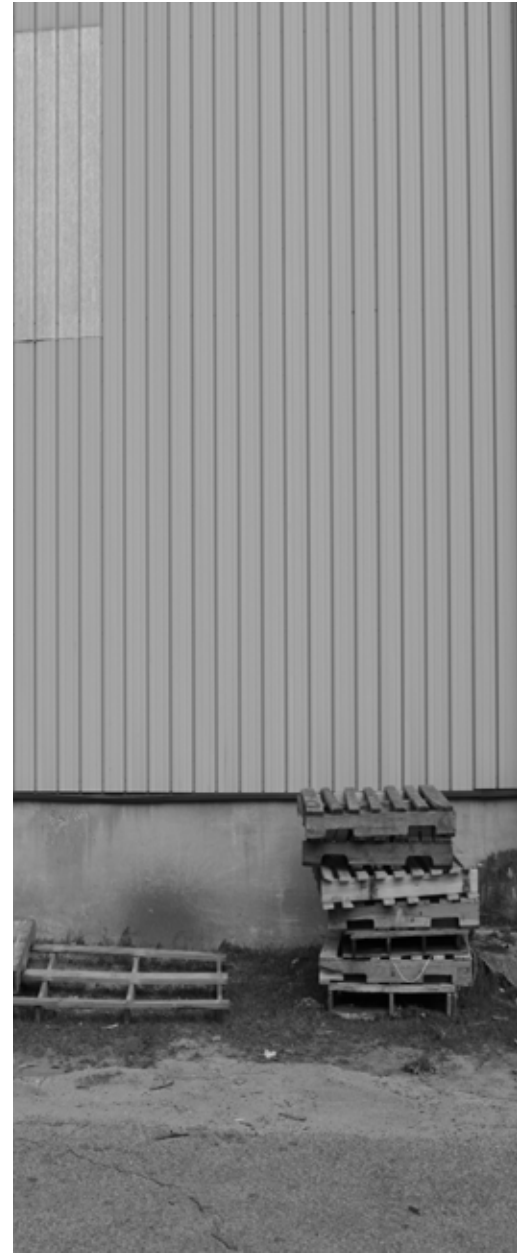
---

---

---

PROCESS





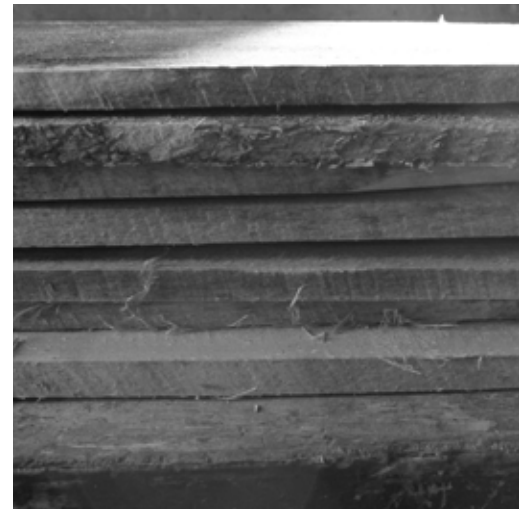
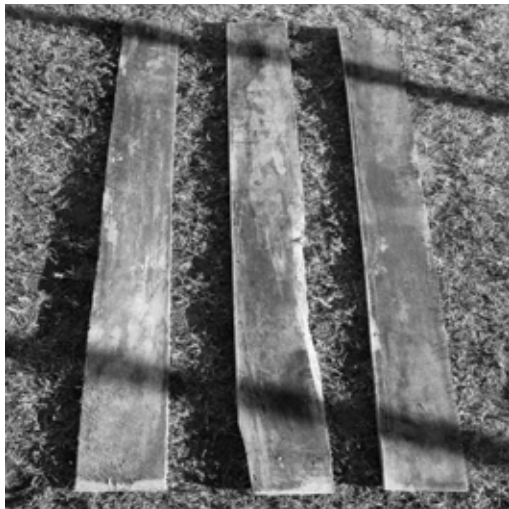
---

DISCOLORED, AND DIRTY, WOOD PALETTES STACKED UP  
SO HIGH YOU'D NEED A FORKLIFT TO GET TO THE TOP.  
WHAT'S EACH ONE MADE OF? WHERE HAS IT BEEN? WHAT  
HAS IT TRANSPORTED?..

MATERIAL : PALETTE  
WALNUT SCRAP  
HOME CONSTRUCTION SCRAP  
STEEL



OBJECT/MATERIAL







C O L L A B O

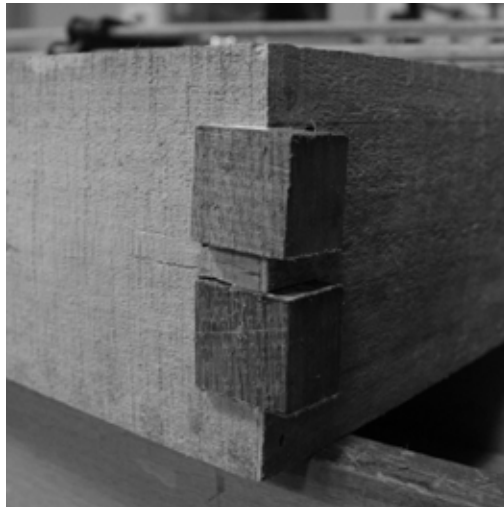
---

---

---

---

PROCESS





---

---

THE TRUCK DOOR WAS SHUT FOR THE DAY, AS THE LAST OF THE ORDER WAS UNLOADED. FROM ATLANTA TO SAVANNAH THE PALETTES HAD CARRIED A SUPPLY OF COCA-COLA AND OTHER SOFT DRINKS TO THE LOCAL MOM AND POP STORE ON THE CORNER. UNFORTUNATELY THE STORE OWNERS COULD ONLY MAKE PROFIT OFF OF THE SODAS THEMSELVES, SO THE PALETTES FOUND A NICE SPOT OUT LAY AND MAYBE ONE DAY MAKE THE TRIP ALL OVER AGAIN...

MATERIAL : PALETTE WOOD  
SCRAP ROSE WOOD SLATS  
RE-PURPOSED FIBER UPHOLSTERY  
STEEL



OBJECT/MATERIAL





C O L L A B O

---

---

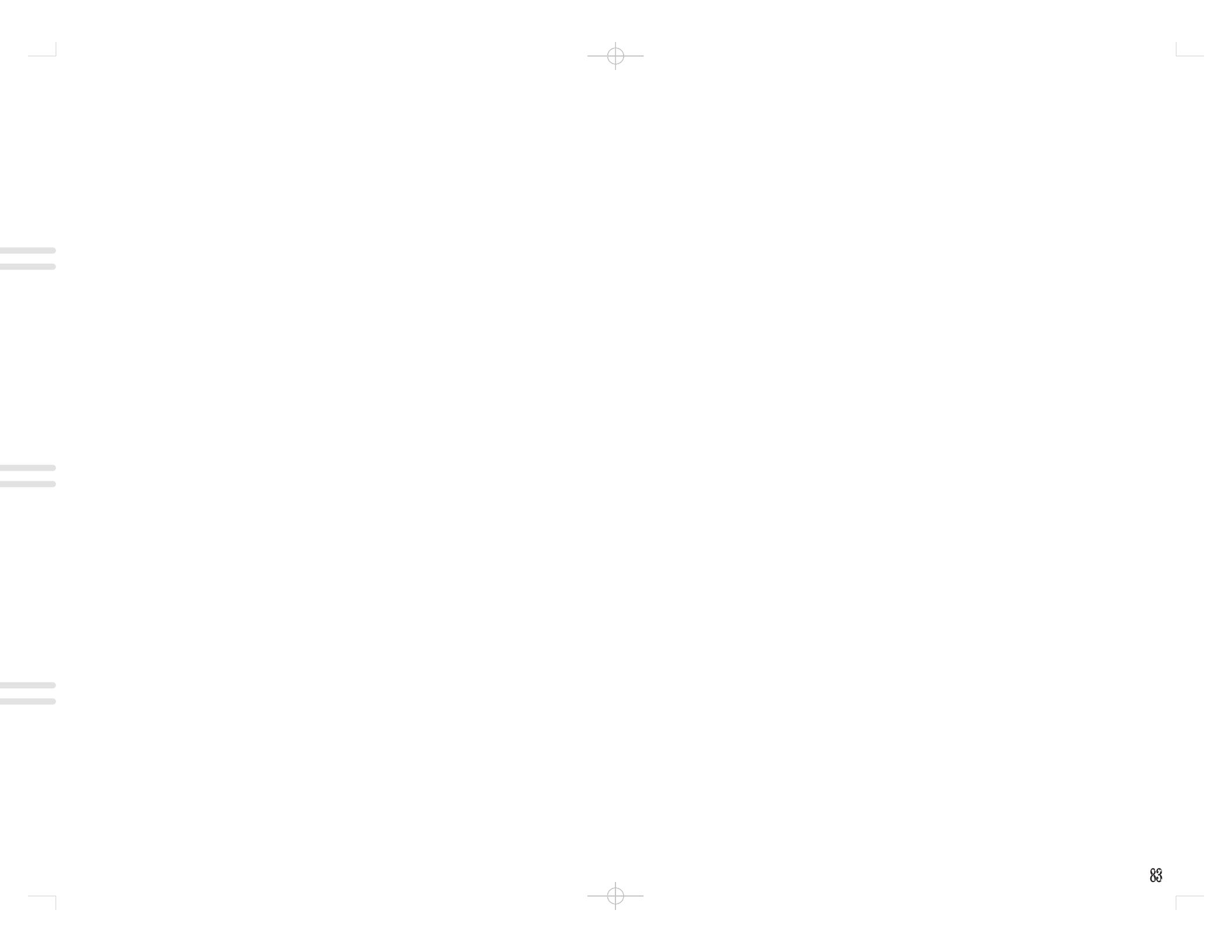
---

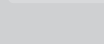
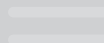
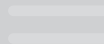
---

PROCESS

















---

THE CURBSIDE COLLECTION IS A COLLABORATION OF THE OLD AND THE DISCARDED WITH REGAINED POWER AND NEW FUNCTION TO CREATE A PRODUCT LINE OF ORIGINAL VINTAGE QUALITY. THROUGH THE MANIPULATED PROCESS ALL THE WAY THROUGH TO THE FINAL PRODUCT, CURBSIDE CARRIES A UNIQUE STORY WITHIN EACH PIECE, PRESENTING NEW MEANING THAT WILL ENTICE ITS FUTURE CONSUMER.



\_SCRAP WOOD RING





**CURBSIDE**  
COLLECTION



\_LEATHER CARD WALLET/IPHONE SLEEVE





**CURBSIDE**  
COLLECTION



\_BOTTLE NECK GUITAR SLIDE







**CURBSIDE**  
COLLECTION



\_RECYCLED GLASS CUP





**CURBSIDE**  
COLLECTION



\_DISCARDED TIMBER VESSEL







**CURBSIDE**  
COLLECTION



\_OSB VESSEL







**CURBSIDE**  
COLLECTION



\_CUTTING BOARD/FUNCTIONAL SURFACE







**CURBSIDE**  
COLLECTION



\_COFFEE BEAN BAG ACCENT PILLOW





**CURBSIDE**  
COLLECTION



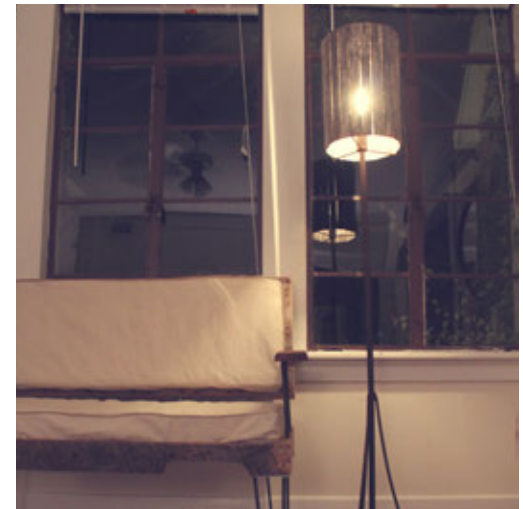
\_FOUND OBJECT LAMP







**CURBSIDE**  
COLLECTION

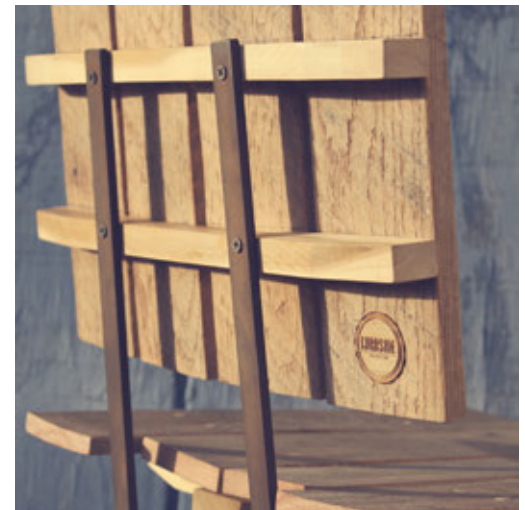


\_DUNE FENCING FLOOR LAMP





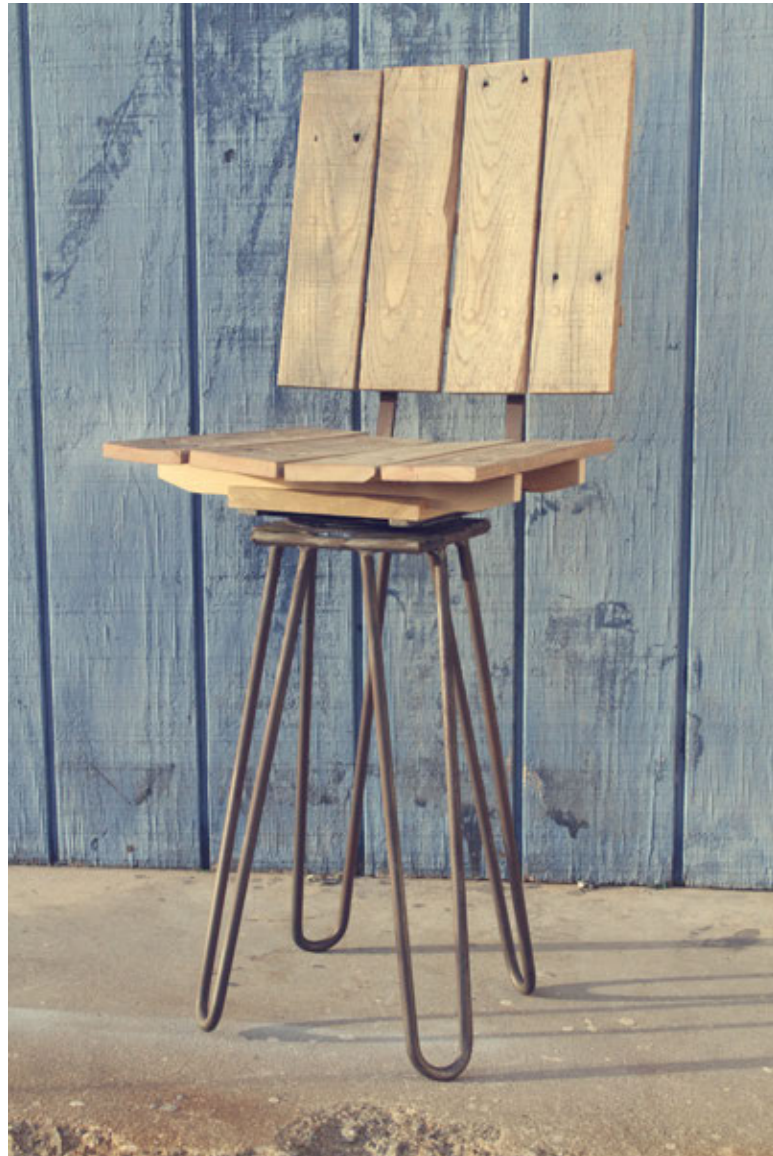
**CURBSIDE**  
COLLECTION



\_OAK PALETTE CHAIR







**CURBSIDE**  
COLLECTION

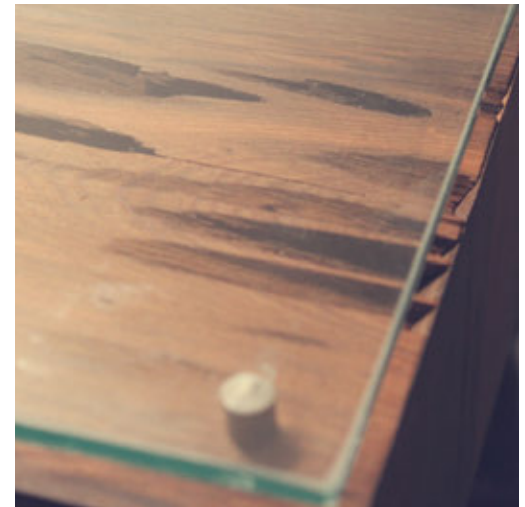


\_PINE PULL-UP WORK SURFACE





**CURBSIDE**  
COLLECTION



\_CYPRESS SIDE TABLE W/CAST BRONZE





**CURBSIDE**  
COLLECTION





\_POPLAR PALETTE COFFEE TABLE





**CURBSIDE**  
COLLECTION



\_OAK PALETTE LOVE SEAT







**CURBSIDE**  
COLLECTION

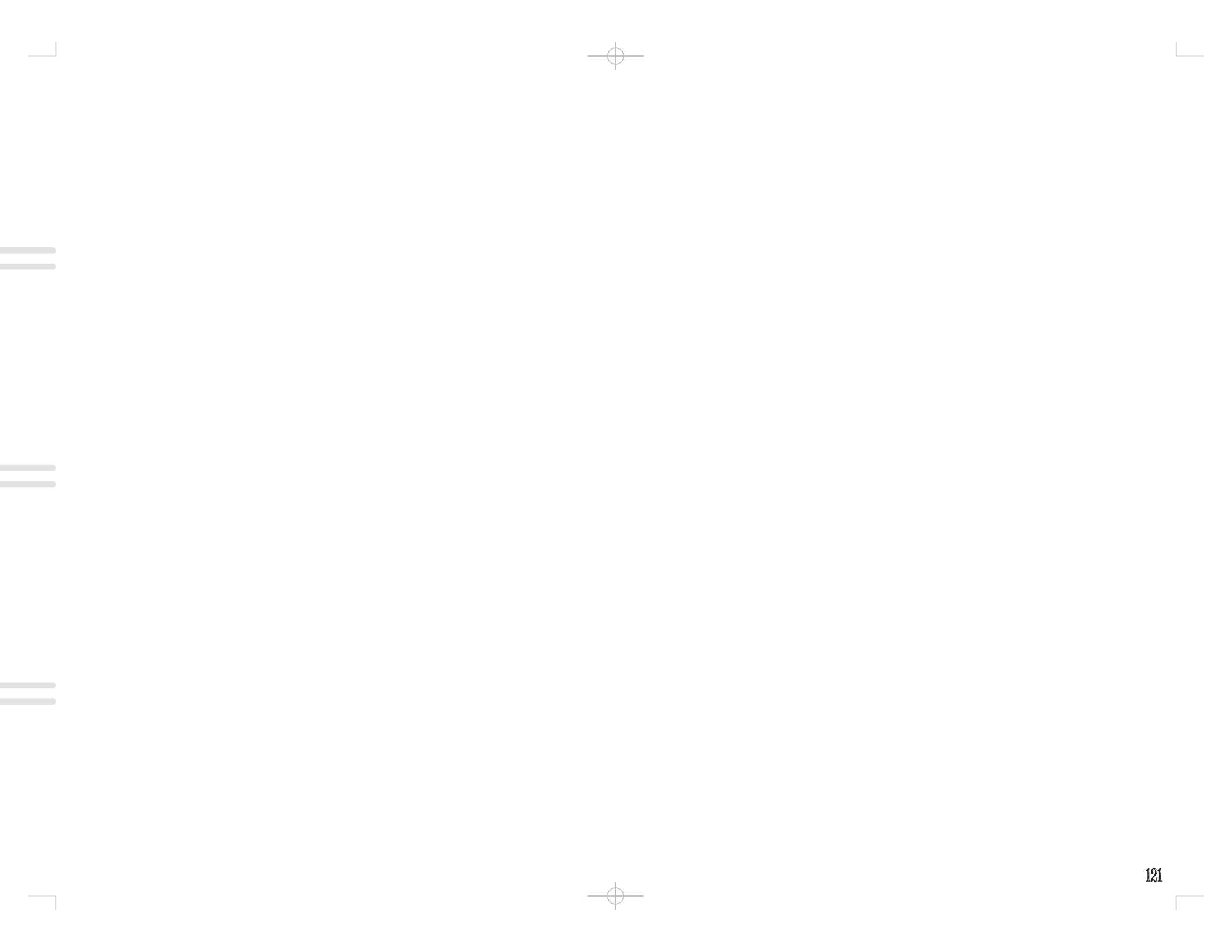


CURBSIDE COLLECTION : 2013













**CURBSIDE**  
COLLECTION



“IT’S ALL IN WHO YOU KNOW.”

\_MOM & DAD





IN COLLABORATION WITH



CURBSIDE COLLECTION

919.740.2951 \*WEBSITE\*

DESIGNED BY DEVIN MICHAEL BAZEMORE  
PHOTOGRAPHY BY DEVIN MICHAEL BAZEMORE  
GRAPHIC ILLUSTRATION BY DEVIN MICHAEL BAZEMORE  
PRINTED BY CREATIVE APPROACH

©2013 DEVIN MICHAEL BAZEMORE

DESIGNED & MADE IN USA



**CURBSIDE**  
COLLECTION

